



3323 Clay Street



MAIN LEVEL

2,145 S^Q FT



UPPER LEVEL 1

2,050 S^Q FT

3323 Clay Street



**Estimated Total Finished
Square Footage: 6,505 SQ FT**

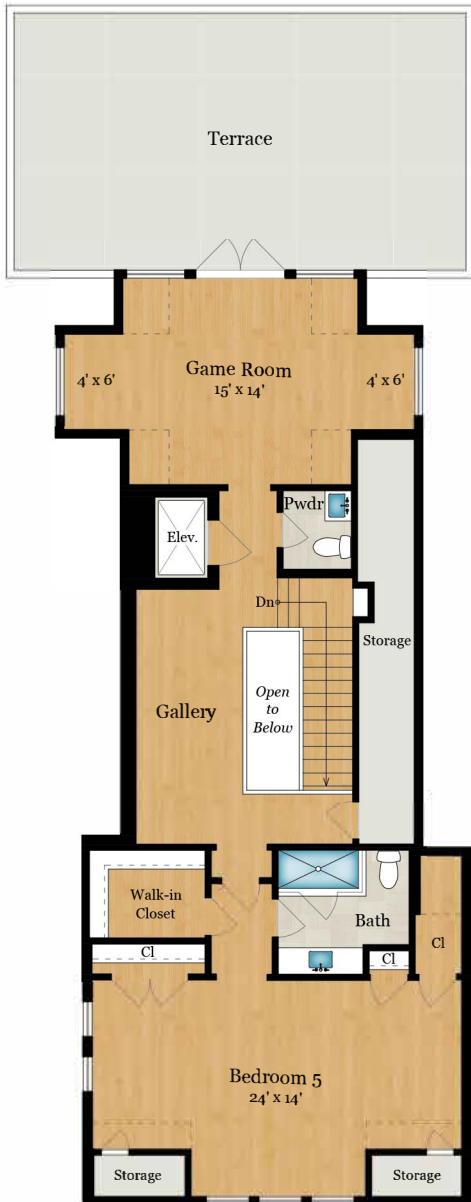
Above-Grade: 6,505 SQ FT Below-Grade: N/A

Plus 695 SQ FT Garage on Garden Level

Plus 160 SQ FT Storage on Upper Level 2

Calculated per ANSI Standard Z765-2003.

* Estimated Total Finished & Unfinished Square Footage: 7,360 SQ FT



UPPER LEVEL 2
1,055 SQ FT



GARDEN LEVEL Up
1,255 SQ FT

Rendering by Floor Plan Visuals.
All measurements are approximate. While deemed reliable, no information on these floor plans should be relied upon without independent verification.